



# Byrne Creek Community School

7777 – 18<sup>th</sup> Street, Burnaby, B.C. V3N 5E5  
604-296-6885 Fax: 604-296-6888

August 2024

Dear Byrne Creek Students and Families:

As summer end approaches, we look forward to welcoming you back for our 2024/2025 school year. We are very excited to begin our new school year. This letter includes important information about School Opening Day on September 3<sup>rd</sup> and the beginning of regular classes on September 4<sup>th</sup>.

A significant focus at Byrne Creek this year will be on cell phone usage. There is lots of recent evidence that shows that student cell phone use has negatively impacted student learning. We want to ensure that students can develop into their full potential intellectually, socially, and emotionally.

The Burnaby School District has updated its Code of Conduct to state that students must have their cell phones out of site (e.g. in their bags, in their lockers) and on silent mode or turned off during instructional time (i.e. class time) unless teacher permission has been granted.

Students are never ever allowed to be on their phones during class time for non-educational reasons, including on social media. Students are allowed to be on their cell phones before and after school and at lunch and break.

Students who fail to comply with this Code of Conduct expectation will meet with their respective school-based administrator and may face further and escalating disciplinary consequences.

At Byrne, this year, we will explore strategies to support students to stay off their cell phones, except when necessary, and limit their social media activity.

We would like to ask for your help and support with this by having conversations with your child(ren) before the school-year begins emphasizing that this change is in their best interest. If you would like to learn more about the impact of cell phone use and social media use on young people, please consider reading, *The Anxious Generation* by Jonathan Haidt:

<https://www.anxiousgeneration.com/>

As well, please feel welcome to contact me, Ms Lim, or Mr Scaligine if you would like to discuss this more.

**Welcome Back!**

**Tuesday, September 3<sup>rd</sup>**

- Students will attend the Student Orientation Session with their **Period 1 class**.
- **Grade 8** students will come to school from **9:45 – 11:30am**. A separate grade 8 information letter will be sent outlining further details.
- **Grade 9-12** students will come to school from **1:00pm – 1:30pm**
- Students in **grades 9-12 without a Period 1 class** will report to the **Library** for their orientation session

**Mandatory Grade Assemblies**

There will be mandatory grade assemblies in the large gym during flex time (8:37 – 9:05am) as follows:

**Grade 8s – Wednesday, September 4<sup>th</sup>**

**Grades 9 & 11 – Thursday, September 5<sup>th</sup>**

**Grades 10 & 12 – Friday, September 6<sup>th</sup>**

**Regular classes begin Wednesday, September 4<sup>th</sup>**

Please see the Bell Schedule below:

<i>Mon. - Thurs. Schedule Times</i>	<b>Monday</b>	<b>Tuesday</b>	<b>Wednesday</b>	<b>Thursday</b>	<b>Friday</b>	<i>Friday Schedule Times</i>
7:22-8:37	<i>X Block</i>					7:22-8:37
8:37-9:05	<i>Flexible Student Support Time</i>				<i>Extended Flex</i>	8:37-9:25
9:05-10:20	Period 1	Period 1	Period 1	Period 1	Period 1	9:25-10:35
10:20-10:35	Break	Break	Break	Break		
10:35-11:50	Period 2	Period 2	Period 2	Period 2	Break	10:35-10:50
					Period 2	10:50-12:00
11:50-12:35	Lunch	Lunch	Lunch	Lunch	Lunch	12:00-12:45
12:35-1:45	Period 3	Period 3	Period 3	Period 3	Period 3	12:45-1:50
1:50-3:00	Period 4	Period 4	Period 4	Period 4	Period 4	1:55-3:00
3:05-4:20	<i>Y Block</i>					3:05-4:20

### **Flexible Student Support Time**

Flexible student support time is available Monday – Thursday from 8:37 to 9:05 am and on Fridays from 8:37 to 9:25am. This is a time when teachers are working with students to support student learning. Students can choose to see their teachers as needed. It is also an opportunity for students to engage in collaboration with peers. More information will be provided to students during opening week.

### **Timetables**

Students must log in to [MyEducation](#) and access their class schedule prior to coming to school. The **MyEducation portal will open on Friday, August 30<sup>th</sup>**. Instructions on how to access this account are attached to this email. Grade 8 students and families will receive a separate letter regarding accessing their MyEducation account. Please note it is essential that your child logs into their own account to find this information.

### **Course Corrections**

If you need to request a course correction, please fill out the electronic course correction request form. The [course correction request form](#) will be available for students to complete from August 30<sup>th</sup> at 9:00am until September 6<sup>th</sup> at 3:00pm. Counsellors will be available at the school on Thursday, August 29<sup>th</sup> from 10:00am – 2:00pm to discuss course corrections.

### **Counsellor Names**

Counsellors work with students according to last names.

Ms. Haywood (A – C) + International Students

Ms. Gillam (D – K) + Access Students

Ms. LePoole (L – R)

Ms. James (S – Z) + PEP Student

### **Entering the School**

Students can enter the building through the front main entrance or through the B wing entrance.

### **Lockers**

Lockers will be available to students using [LockerGM](#) app. The system will be available starting August 29<sup>th</sup>. Login using your student number as the user id and your date of birth (yyyy-mm-dd format – i.e. 2009-03-26). Please change your password when you login for the first time.

### **Cafeteria Service**

Cafeteria service will begin Wednesday, September 4<sup>th</sup>.

### **Fees and Payments**

Please see the school fee list available on the school [website](#) The preferred method for fee collection is the Burnaby School District's secure online payment program, [SchoolCash Online](#).

### **School Photo Day**

School Photo Day is scheduled for Wednesday, September 4<sup>th</sup>. Missed photo & re-take picture day is scheduled for Tuesday, October 8<sup>th</sup>.

**Community Council Meeting – Monday September 16th at 7:00pm**

All parents welcome. Details will be sent out the first week of school.

**School Calendar**

The school calendar is available on the Byrne Creek website.

We are looking forward to welcoming everyone back on Tuesday, September 3<sup>rd</sup>!

Sincerely,

*Ben Paré*

Ben Paré  
Principal



## Byrne Creek Community School

7777 - 18<sup>th</sup> Street, Burnaby, BC V3N 5E5

Tel: 604-296-6885 Fax: 604-296-6888

byrnecreek.burnabyschools.ca

## MyEducationBC Family Portal

All students and parents have a [MyEducationBC](#) account. Access to MyEducation is currently disabled and will be re-enabled on Friday, August 30<sup>th</sup>.

Note: Parents of students new to Byrne Creek will receive an email directly from MyEducationBC with their login information.

### **Important**

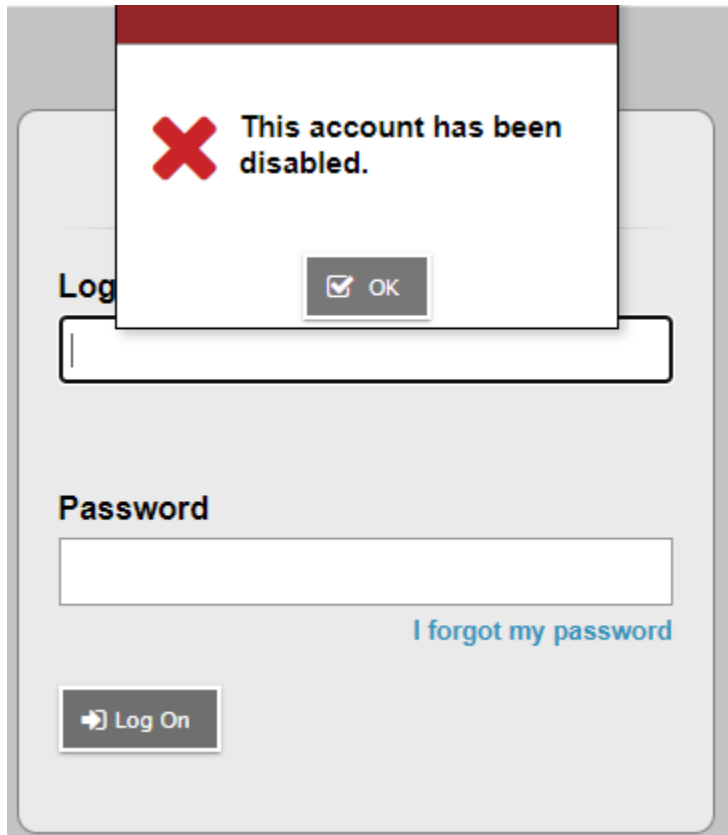
- When accessing MyEducationBC for the first time you must use a computer and not a smart phone.
- Enable popups in your browser.
- Not all browsers work correctly with MyEducationBC; we suggest that you use Google Chrome or Microsoft Internet Explorer if possible.
- Remember that all login information (Login ID & Password) is case sensitive.

### **Login to MyEducationBC**

- <https://myeducation.gov.bc.ca/aspen/logon.do>
- When you login you may see the following message indicating that your password has expired. Please create a new password.

The image shows a screenshot of a web application interface. A modal dialog box titled "Password Requirements" is displayed in the foreground. It features a red header bar and a red "X" icon. The main text of the dialog reads: "Your password has expired. Please create a new one." Below this text is a single "OK" button. In the background, a login form is visible, partially obscured by the dialog. The form includes three input fields labeled "Current Password", "New Password", and "Confirm New Password". At the bottom of the form are "OK" and "Cancel" buttons. To the left of the dialog, a list of password requirements is partially visible, including "Minimum", "At least", "At least", "At least", and "Can't name letters". To the right, the words "middle" and "y sequential" are also partially visible.

- You have 5 attempts to login to your account.
- If you see this message, please use the "I forgot my password" function.
- Please remember that all login information is case sensitive.



- You have 2 attempts to use the “I forgot my password” function.
- After 2 attempts this function will be disabled.
  - Parents - please complete the Parent MyEducationBC password reset [form](#).
  - Students - please complete the Student MyEducationBC password reset [form](#).